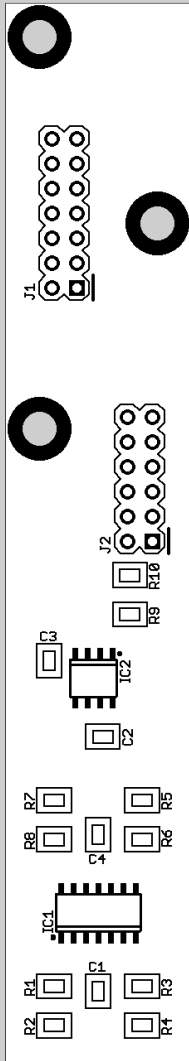


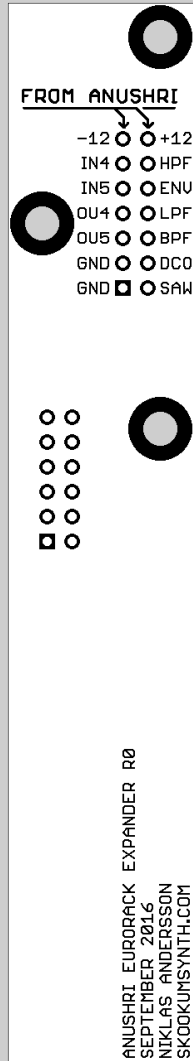
Skookum Synth 002 "ANEX" Anushri Expander - Parts guide

Notes: To help with proper alignment it is recommended to solder the MIDI and audio jacks after mounting them to the front panel. J1 is mounted on the side that has the "FROM ANUSHRI" annotation, not on the same side as the rest of the SMD components.

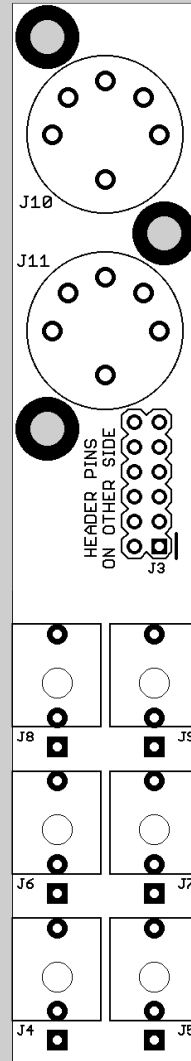
Main board,
front view.



Main board,
rear view.



Interface board,
front view.



Parts list - All resistors and capacitors are 0805 size, IC's are SOIC

R1, R3, R5	RESISTOR, 30K
R7, R8	RESISTOR, 100K
R2, R4, R6, R9	RESISTOR, 120K
R10	RESISTOR, 680K
C1, C2, C3, C4	CAPACITOR 0.1uF 50V
IC1	TL074
IC2	TL072
J1	14 POS, DUAL ROW HEADER, MALE
J2	12 POS, DUAL ROW HEADER, MALE
J3	12 POS, DUAL ROW HEADER, FEMALE
J4, J5, J6, J7, J8, J9	3.5MM AUDIO JACKS, "THONKICONN"
J10, J11	CUI Inc. SD-50BV DIN JACK
OTHER:	
	3X 12mm M3 F/F STANDOFF
	3X 10mm M3 F/M STANDOFF
	12X M3 MACHINE SCREW
	14-POSITION IDC SOCKET
	14-CONDUCTOR RIBBON CABLE
	(PEEL OFF 2 CONDUCTORS FROM
	A 16-COND. CABLE TO MAKE A
	14-COND. CABLE)

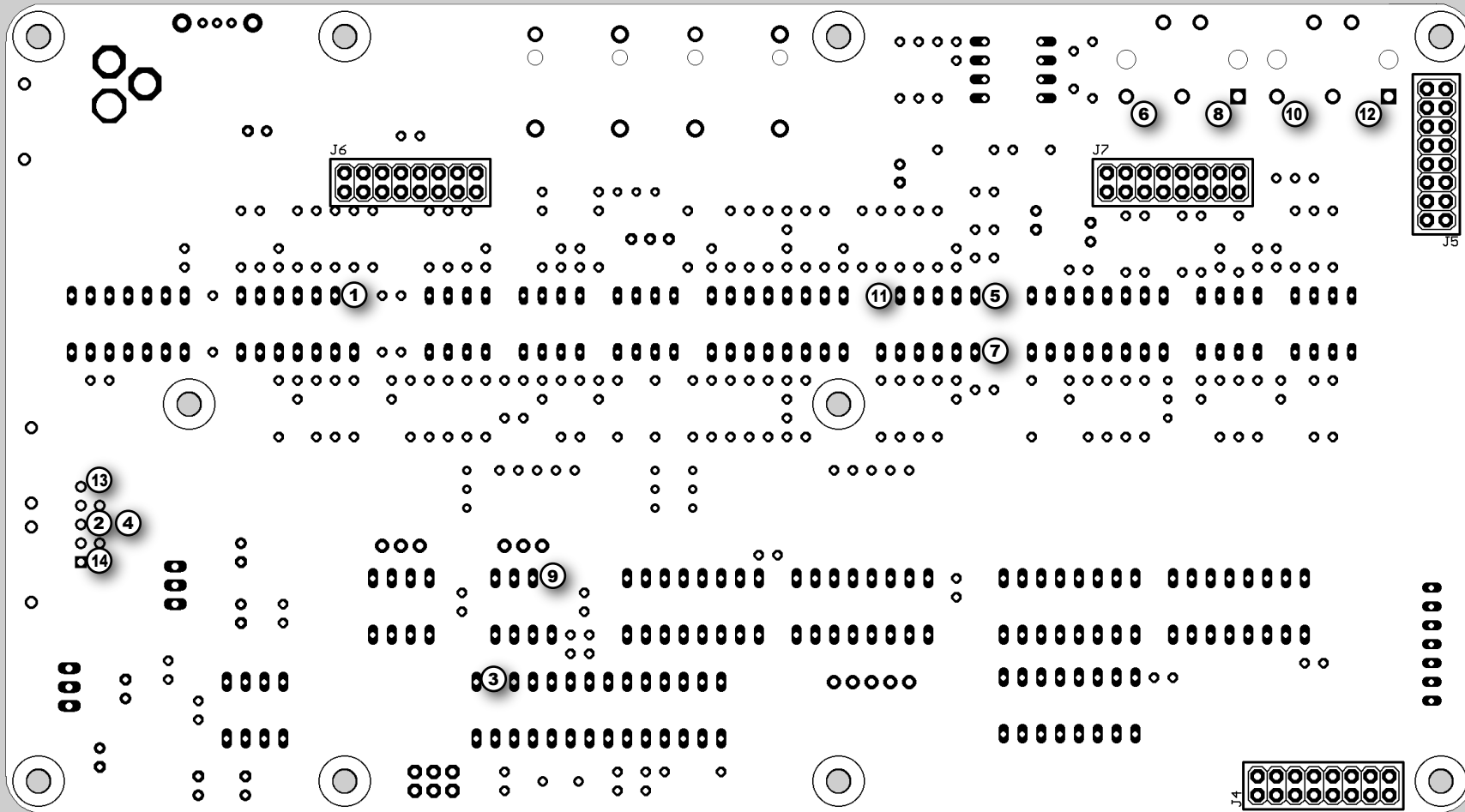
Skookum Synth 002 "ANEX" Anushri Expander - Wiring guide

Notes: Wiring is easiest done with a 14 conductor ribbon cable with a female IDC connector on the expander side.

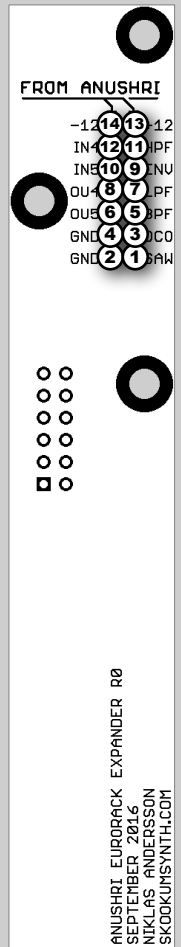
This will allow you to detach the expander, if necessary.

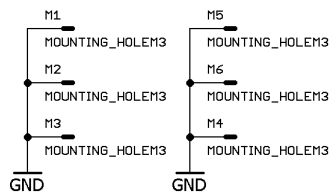
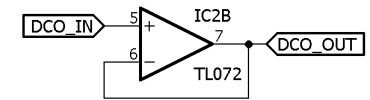
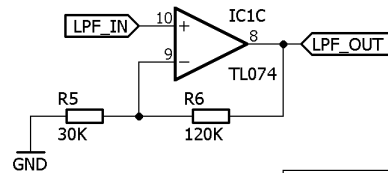
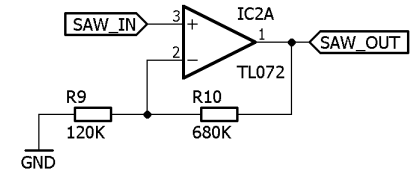
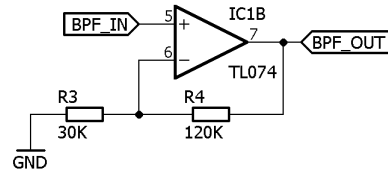
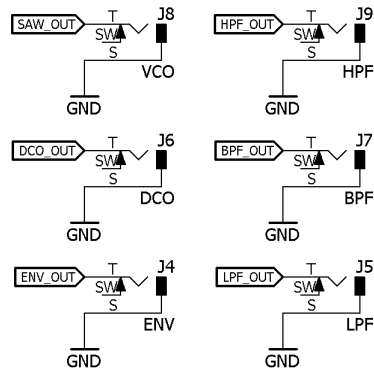
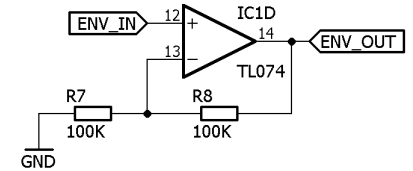
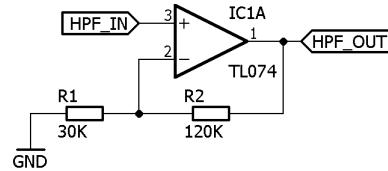
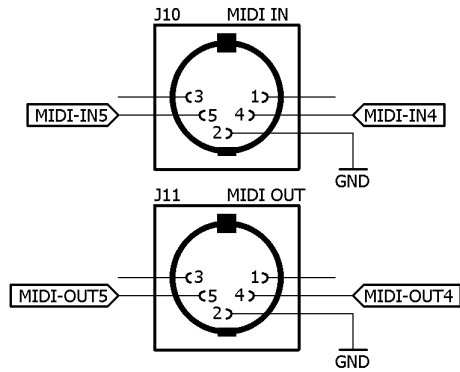
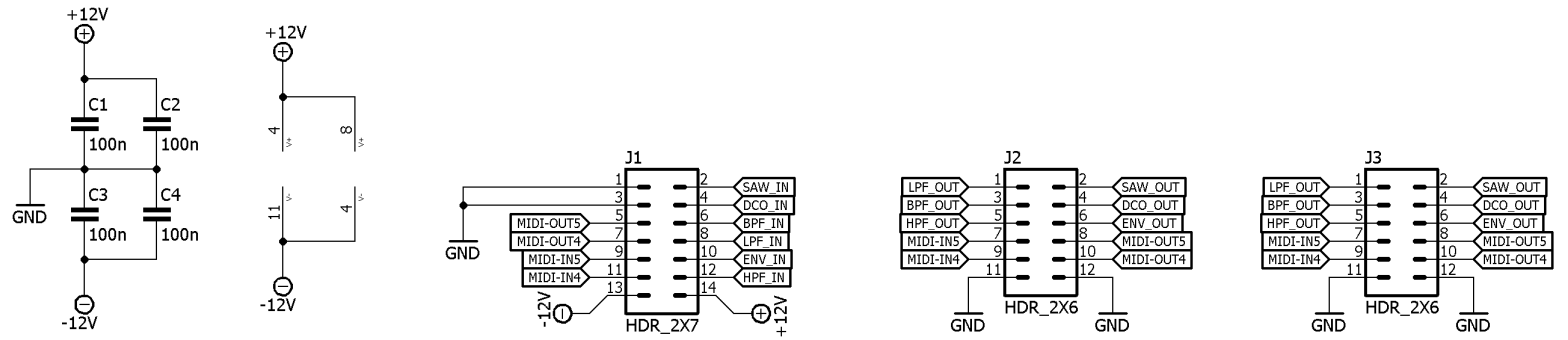
It is recommended to provide mechanical support to the individual wires with a non-conductive adhesive such as hot glue.

View of Anushri main board, solder side.



Rear view of expander.





SKOOKUMSYNTH.COM	
002 ANUSHRI EXPANDER	
TITLE: anookum expander r0	
Document Number:	REV: R0
Date: 2017-09-13 7:05 PM	Sheet: 1/1